



**YAMAHA**

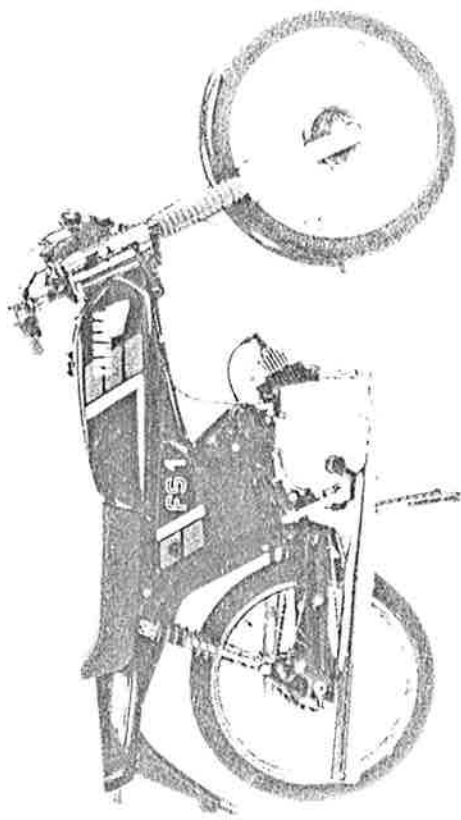
**PARTS CATALOGUE**

**FS1'88 (3EE1)**

**DENMARK**

283EE-331E1

**A2**



A3

# FOREWORD

This Parts Catalogue is related to the parts in use for the Yamaha FS1'88(3EE1).  
When you are ordering replacement parts for the FS1'88(3EE1), refer to this Parts Catalogue and quote both part numbers and part names correctly.

- 1 Modifications or additions which have been made after issue of the Parts Catalogue will be announced in the Yamaha Parts News.  
It is advisable that according to the Yamaha Parts News you make necessary corrections to the Parts Catalogue on hand to keep it up-to-date.

## 2 Abbreviations

The following abbreviations are used in this Parts Catalogue.

- U.R. Use size (thickness) and/or number as required.
- U.N. Use as many as you need.
- A.P. Alternate Parts
- L.M. Local Made
- F= Frame No. (Applicable machine No.)

- 3 The parts marked with (+) in the parts number column of this Catalogue are not supplied with by Yamaha, those have to be found locally.

- 4 Parts, which are to be supplied in the form of assemblies, are listed with an indention of one letter's space, and a dot ( . ) is put against the name of each part.

**EXAMPLE** CARBURETOR ASS'Y  
     . JET, pilot  
     . NOZZLE, main

## 5 Indication of No. of constituent parts for assembly

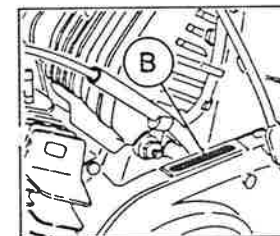
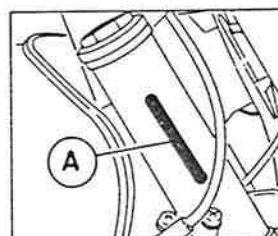
The numeral appearing to the right of each constituent part under the description indicates the quantity of such parts for each individual assembly unit.

**EXAMPLE**

| Part No.     | Description               | Q'ty | Remarks |
|--------------|---------------------------|------|---------|
| 2F5-83310-60 | FRONT FLASHER LIGHT ASS'Y | 2    |         |
| 115-83311-60 | . BULB (6V-18W)           | 1    |         |
| 1M1-83309-60 | . REFLECTOR               | 1    |         |

## 6. Initial Serial No. and Color Code

|                       |                          |
|-----------------------|--------------------------|
| (A) Frame Serial No.  |                          |
| (B) Engine Serial No. | 3EE-000101 and following |



| Color Code | Color Name   | Abbreviate |
|------------|--------------|------------|
| 33         | YAMAHA BLACK | YB         |
| G3         | FRENCH BLUE  | FBL        |
| 66         | SUNSHINE RED | SR         |

7. Applicable colors of graphics are represented in the "Remarks" column by the letter(s) appropriately picked out of the full word(s) showing such colors.

**EXAMPLE**

| Part No.        | Description              | Q'ty | Remarks   |
|-----------------|--------------------------|------|-----------|
| 2N4-24110-00-X5 | FUEL TANK COMP.          | 1    | MAXIM RED |
| 3J1-24240-10    | . GRAPHIC, fuel tank set | 1    | for MXR   |

# CONTENTS

## ENGINE

|                          |           |
|--------------------------|-----------|
| Cylinder .....           | B2        |
| Crankshaft, Piston ..... | B3        |
| Intake .....             | B4        |
| Carburetor .....         | B5        |
| Exhaust .....            | B6        |
| Crankcase .....          | B7        |
| Crankcase Cover 1 .....  | B8        |
| Starter .....            | B9        |
| Clutch .....             | B10 ~ B11 |
| Transmission .....       | B12       |
| Shift Cam. Fork .....    | B13       |
| Shift Shaft .....        | B14       |

## CHASSIS

|                              |           |
|------------------------------|-----------|
| Frame .....                  | B15       |
| Fender .....                 | C2        |
| Side Cover .....             | C3        |
| Rear Arm. Suspension .....   | C4        |
| Steering .....               | C5        |
| Front Fork .....             | C6        |
| Fuel Tank .....              | C7        |
| Seat .....                   | C8        |
| Front Wheel .....            | C9        |
| Rear Wheel .....             | C10 ~ C11 |
| Steering Handle. Cable ..... | C12       |
| Stand. Footrest .....        | C13       |
| Generator .....              | C14       |
| Meter .....                  | C15       |
| Headlight .....              | D2        |

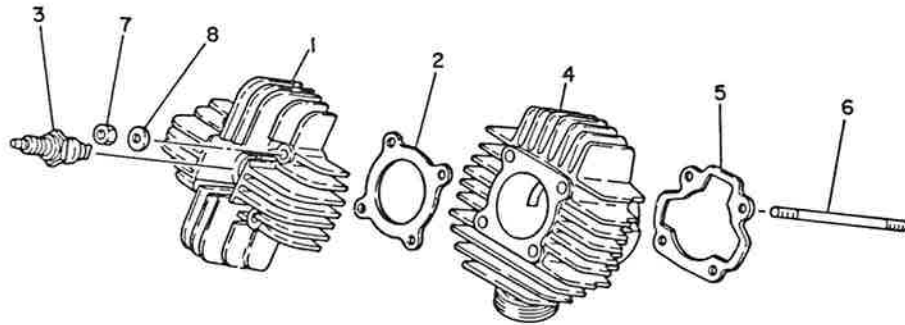
|                            |    |
|----------------------------|----|
| Taillight .....            | D3 |
| Handle Switch. Lever ..... | D4 |
| Electrical 1 .....         | D5 |

## INDEX

|                       |         |
|-----------------------|---------|
| Numerical Index ..... | M1 ~ M2 |
|-----------------------|---------|

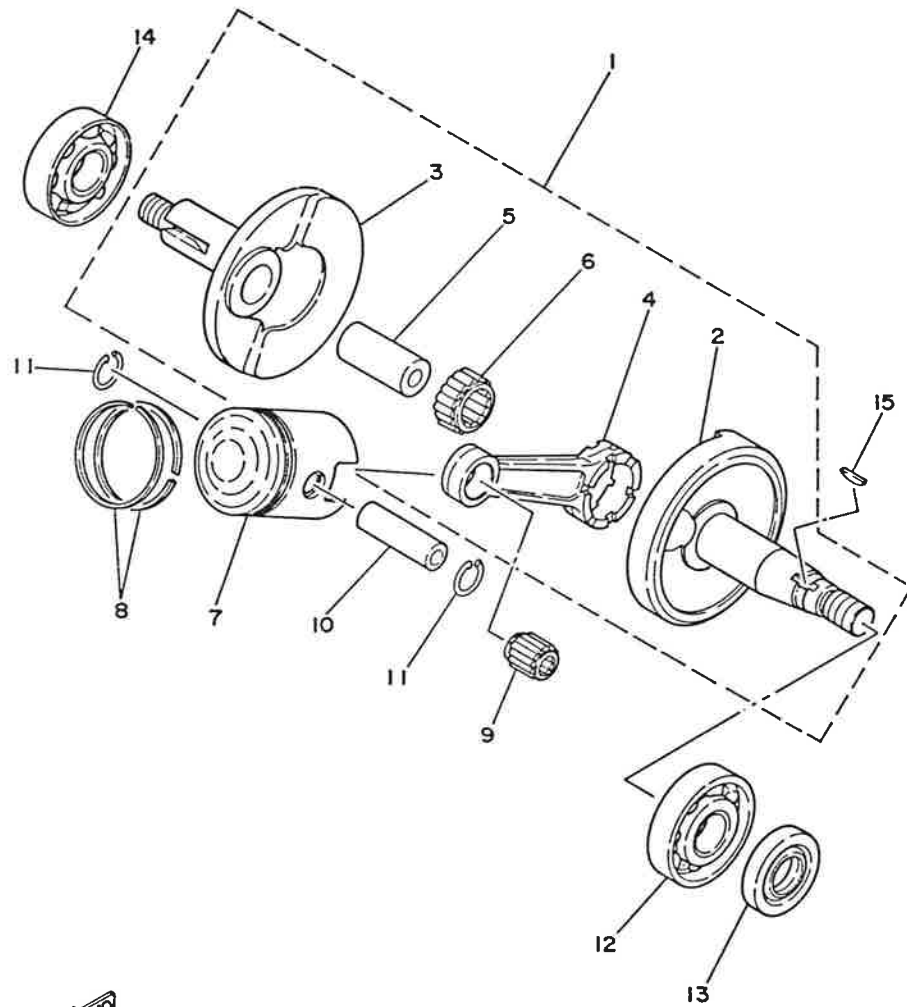
FIG. 1 CYLINDER

| REF. NO. | PART NO.     | DESCRIPTION             | Q'TY | REMARKS |
|----------|--------------|-------------------------|------|---------|
| 1        | 257-11111-01 | HEAD, cylinder 1        | 1    |         |
| 2        | 381-11181-60 | GASKET, cylinder head 1 | 1    |         |
| 3        | 94701-00248  | PLUG, spark (NGK BR6HS) | 1    |         |
| 4        | 381-11311-61 | CYLINDER 1              | 1    |         |
| 5        | 3E1-11351-01 | GASKET, cylinder        | 1    |         |
| 6        | 90116-06026  | BOLT, stud              | 4    |         |
| 7        | 95303-06600  | NUT                     | 4    |         |
| 8        | 92901-06200  | WASHER, plain           | 4    |         |



3EE331-8010

FIG. 2 CRANKSHAFT. PISTON



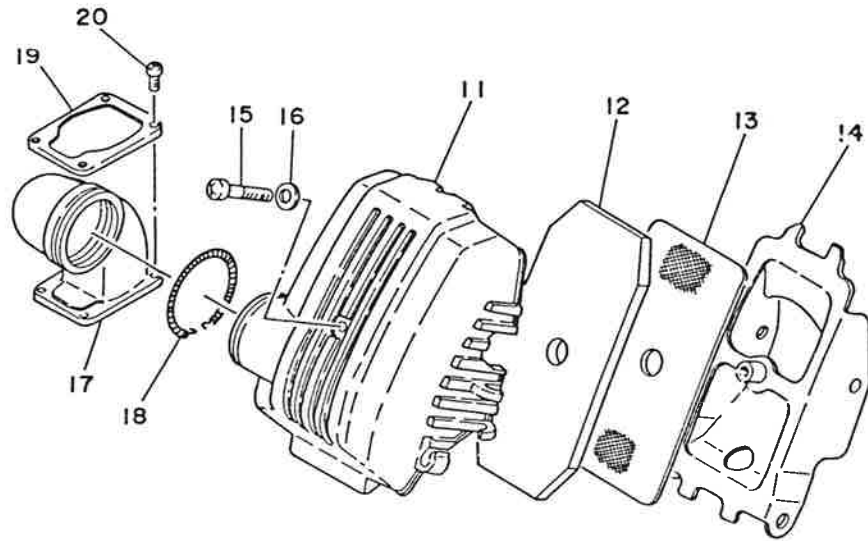
| REF. NO. | PART NO.        | DESCRIPTION               | Q'TY | REMARKS |
|----------|-----------------|---------------------------|------|---------|
| 1        | 3E8-11400-00    | CRANKSHAFT ASSY           | 1    |         |
| 2        | 3E8-11412-00    | .CRANK 1                  | 1    |         |
| 3        | 3E8-11422-00    | .CRANK 2                  | 1    |         |
| 4        | 3R1-11651-01    | .ROD, connecting          | 1    |         |
| 5        | 257-11681-00    | .PIN, crank 1             | 1    |         |
| 6        | 93310-418T0     | .BEARING, cylindrical     | 1    |         |
| 7        | 3E8-11631-00-96 | PISTON (STD)              | 1    |         |
|          | 3E8-11635-00    | PISTON (0.25MM O/S)       | 1    | AP      |
|          | 3E8-11636-00    | PISTON (0.50MM O/S)       | 1    | AP      |
| 8        | 260-11601-02    | PISTON RING SET (STD)     | 1    |         |
|          | 260-11601-12    | PISTON RING SET (1ST O/S) | 1    | AP      |
|          | 260-11601-22    | PISTON RING SET (2ND O/S) | 1    | AP      |
| 9        | 93310-11268     | BEARING, cylindrical      | 1    |         |
| 10       | 102-11633-02    | PIN, piston               | 1    |         |
| 11       | 93450-13022     | CIRCLIP                   | 2    |         |
| 12       | 93306-20458     | BEARING                   | 1    |         |
| 13       | 93102-20009     | OIL SEAL                  | 1    |         |
| 14       | 93306-30302     | BEARING (B6303C3)         | 1    |         |
| 15       | 90280-03017     | KEY, woodruff             | 1    |         |



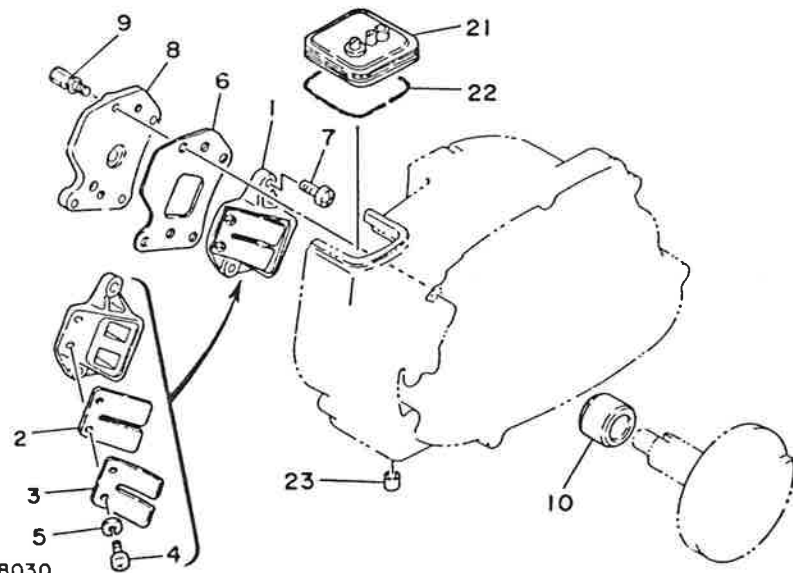
5A1310-2020

B3

FIG. 3 INTAKE

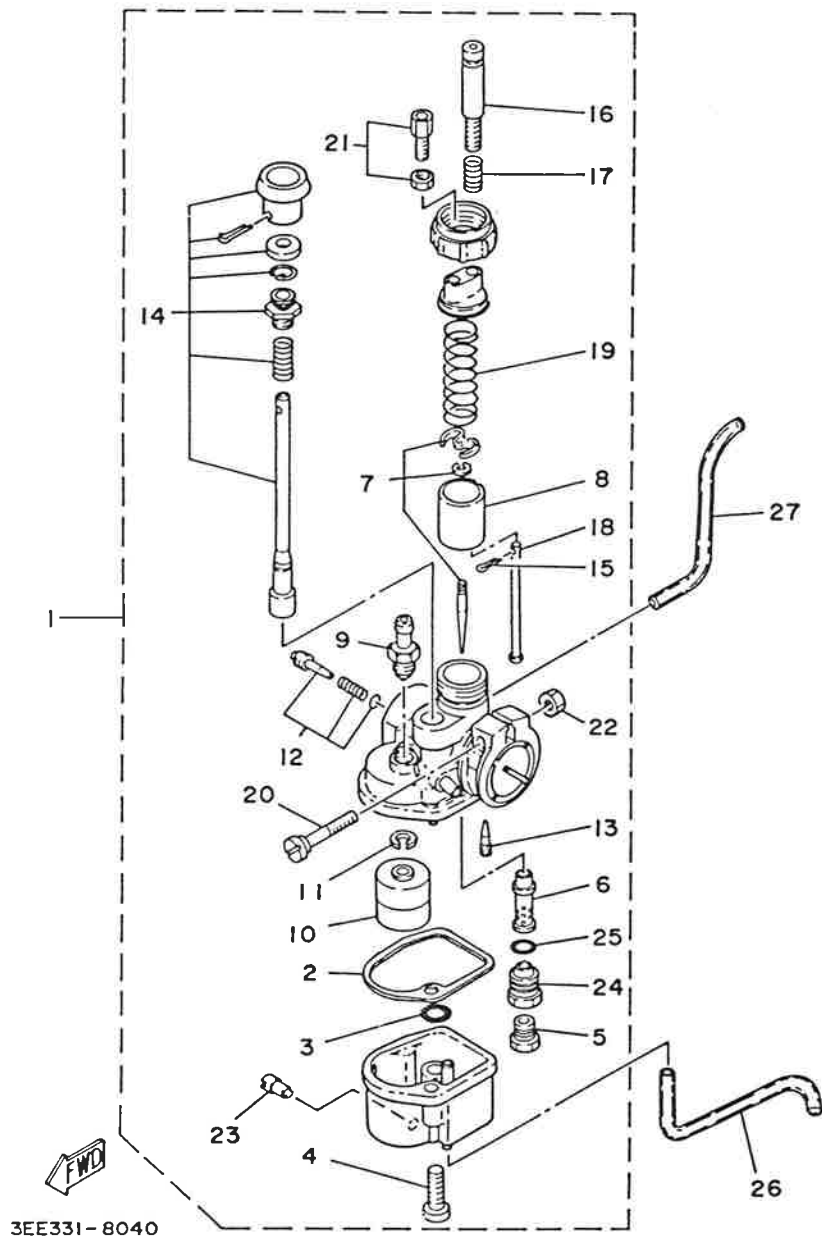


| REF. NO. | PART NO.     | DESCRIPTION          | Q'TY | REMARKS |
|----------|--------------|----------------------|------|---------|
| 1        | 378-13610-61 | REED VALVE ASSY      | 1    |         |
| 2        | 314-13613-01 | .REED, valve         | 1    |         |
| 3        | 314-13616-01 | .STOPPER, reed valve | 1    |         |
| 4        | 93501-03008  | .SCREW, pan head     | 2    |         |
| 5        | 92990-03100  | .WASHER, spring      | 2    |         |
| 6        | 378-13621-60 | GASKET, valve seat   | 1    |         |
| 7        | 92501-06014  | SCREW, pan head      | 2    |         |
| 8        | 3EE-13505-00 | JOINT, pump          | 1    |         |
| 9        | 90109-06343  | BOLT                 | 4    |         |
| 10       | 90387-17139  | COLLAR               | 1    |         |
| 11       | 5A3-14411-00 | CASE, air cleaner 1  | 1    |         |
| 12       | 3E8-14451-00 | ELEMENT, air cleaner | 1    |         |
| 13       | 3E8-14473-00 | GUIDE                | 1    |         |
| 14       | 3E8-14498-00 | STAY 1               | 1    |         |
| 15       | 92503-06045  | SCREW PAN HEAD       | 1    |         |
| 16       | 92901-06600  | WASHER, plate        | 1    |         |
| 17       | 3E8-14453-00 | JOINT, air cleaner 1 | 1    |         |
| 18       | 90506-06106  | SPRING, tension      | 1    |         |
| 19       | 3E8-14417-00 | COVER 1              | 1    |         |
| 20       | 98580-04010  | SCREW, pan head      | 4    |         |
| 21       | 288-14481-02 | CAP, carburetor      | 1    |         |
| 22       | 90506-06095  | SPRING, tension      | 1    |         |
| 23       | 257-15433-00 | CLEANER, drain       | 1    |         |



3AV322-8030

FIG. 4 CARBURETOR

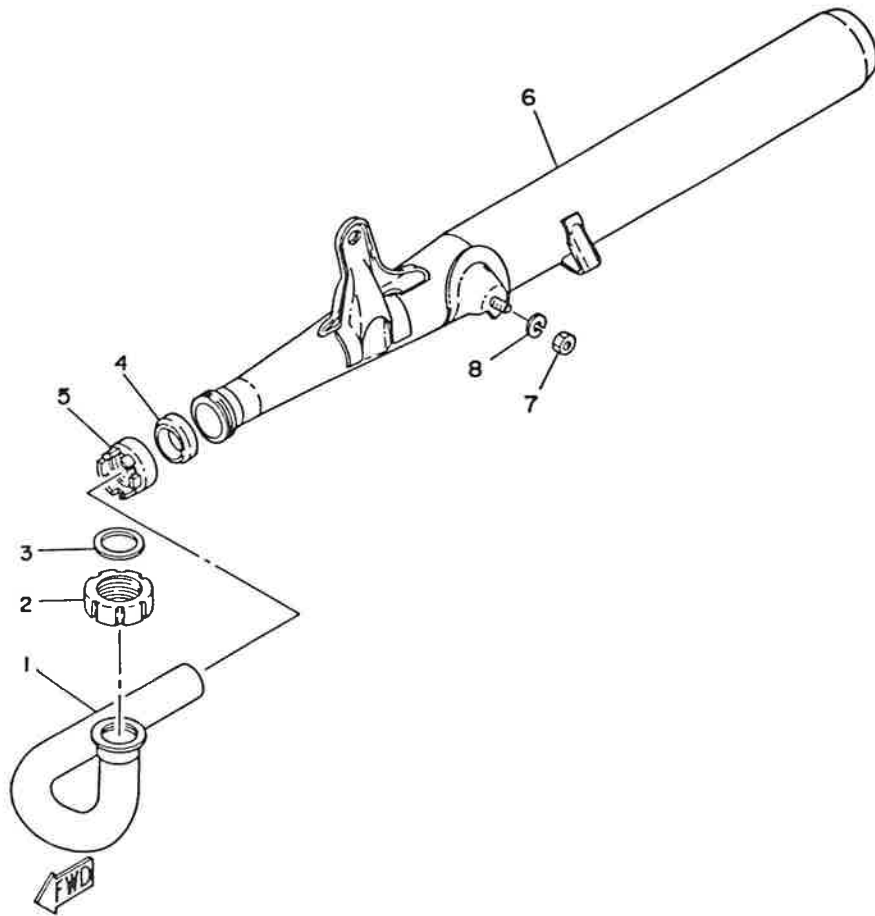


| REF. NO. | PART NO.     | DESCRIPTION             | Q'TY | REMARKS |
|----------|--------------|-------------------------|------|---------|
| 1        | 3EE-14101-00 | CARBURETOR ASSY 1       | 1    |         |
| 2        | 260-14184-00 | .GASKET, float chamber  | 1    |         |
| 3        | 93220-08002  | .O-RING                 | 1    |         |
| 4        | 92502-16018  | .SCREW, pan head        | 1    |         |
| 5        | 127-14143-11 | .JET, main (# 55)       | 1    |         |
| 6        | 3EE-14141-13 | .NOZZLE, main           | 1    |         |
| 7        | 3EE-1490J-00 | .NEEDLE SET             | 1    |         |
| 8        | 283-14112-25 | .VALVE, throttle 1      | 1    |         |
| 9        | 260-14190-12 | .NEEDLE VALVE ASSY      | 1    |         |
| 10       | 4A5-14185-00 | .FLOAT                  | 1    |         |
| 11       | 363-14137-00 | .CLIP                   | 1    |         |
| 12       | 59L-14104-00 | .AIR SCREW SET          | 1    |         |
| 13       | 260-14142-25 | .JET, pilot (# 25)      | 1    |         |
| 14       | 5K2-1410A-00 | .STARTER SET            | 1    |         |
| 15       | 91401-12010  | .PIN, cotter            | 1    |         |
| 16       | 395-14121-00 | .SCREW, throttle stop   | 1    |         |
| 17       | 127-14133-00 | .SPRING, throttle stop  | 1    |         |
| 18       | 405-14114-00 | .BAR, throttle          | 1    |         |
| 19       | 127-14131-00 | .SPRING, throttle valve | 1    |         |
| 20       | 127-14125-01 | .SCREW                  | 1    |         |
| 21       | 35Y-14106-00 | .CABLE ADJUST SCREW SET | 1    |         |
| 22       | 95303-05600  | .NUT                    | 1    |         |
| 23       | 12R-14191-00 | .PLUG, drain            | 1    |         |
| 24       | 4A5-14145-00 | .SETTER, needle jet     | 1    |         |
| 25       | 214-14147-00 | .O-RING                 | 1    |         |
| 26       | 90445-05013  | HOSE                    | 1    |         |
| 27       | 90445-05015  | HOSE                    | 1    |         |



FIG. 5 EXHAUST

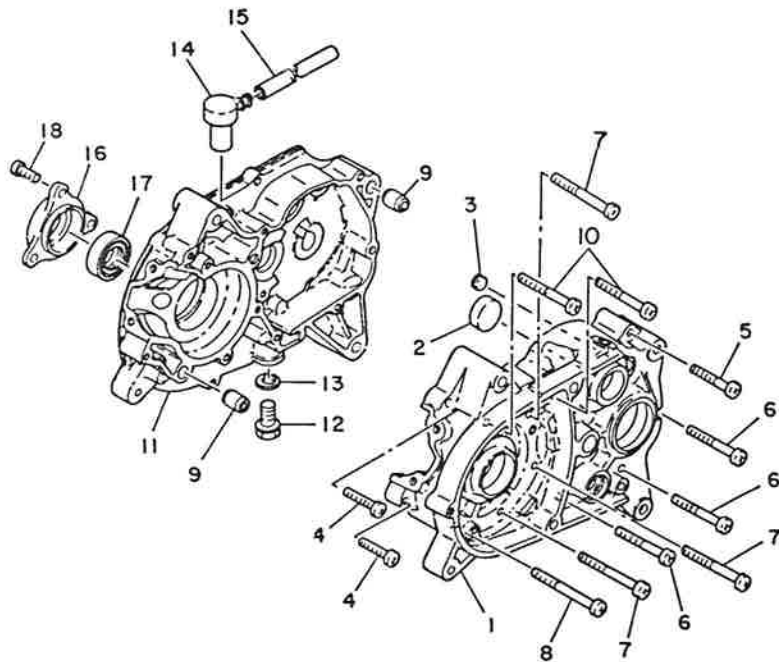
| REF. NO. | PART NO.     | DESCRIPTION          | Q'TY | REMARKS |
|----------|--------------|----------------------|------|---------|
| 1        | 348-14611-00 | PIPE, exhaust 1      | 1    |         |
| 2        | 1L4-14612-00 | NUT, ring            | 1    |         |
| 3        | 132-14613-00 | GASKET, exhaust pipe | 1    |         |
| 4        | 3E1-14714-00 | GASKET, muffler      | 1    |         |
| 5        | 109-14713-00 | NUT, muffler joint   | 1    |         |
| 6        | 381-14710-10 | MUFFLER ASSY 1       | 1    |         |
| 7        | 95303-08600  | NUT                  | 1    |         |
| 8        | 92990-08100  | WASHER, spring       | 1    |         |



3EE331-8050

B6

FIG. 6 CRANKCASE



| REF. NO. | PART NO.     | DESCRIPTION          | Q'TY | REMARKS |
|----------|--------------|----------------------|------|---------|
| 1        | 257-15111-02 | CRANKCASE 1          | 1    |         |
| 2        | 90338-26136  | PLUG                 | 1    |         |
| 3        | 90334-10006  | PLUG, straight       | 1    |         |
| 4        | 92501-06030  | SCREW, pan head      | 2    |         |
| 5        | 92503-06045  | SCREW PAN HEAD       | 1    |         |
| 6        | 92501-06050  | SCREW, pan head      | 3    |         |
| 7        | 92501-06060  | SCREW, pan head      | 3    |         |
| 8        | 92501-06065  | SCREW, pan head      | 1    |         |
| 9        | 99510-12016  | PIN, dowel           | 2    |         |
| 10       | 92501-06055  | SCREW, pan head      | 2    |         |
| 11       | 378-15121-60 | CRANKCASE 2          | 1    |         |
| 12       | 90340-12005  | PLUG, straight screw | 1    |         |
| 13       | 90430-12038  | GASKET               | 1    |         |
| 14       | 583-15371-00 | BREATHER             | 1    |         |
| 15       | 90446-07009  | HOSE                 | 1    |         |
| 16       | 378-15359-60 | HOUSING, oil seal    | 1    |         |
| 17       | 93103-25078  | OIL SEAL             | 1    |         |
| 18       | 92501-06014  | SCREW, pan head      | 3    |         |



5A2342-2080

B7

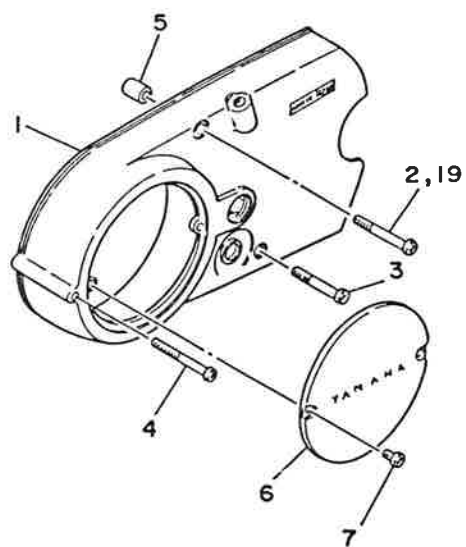
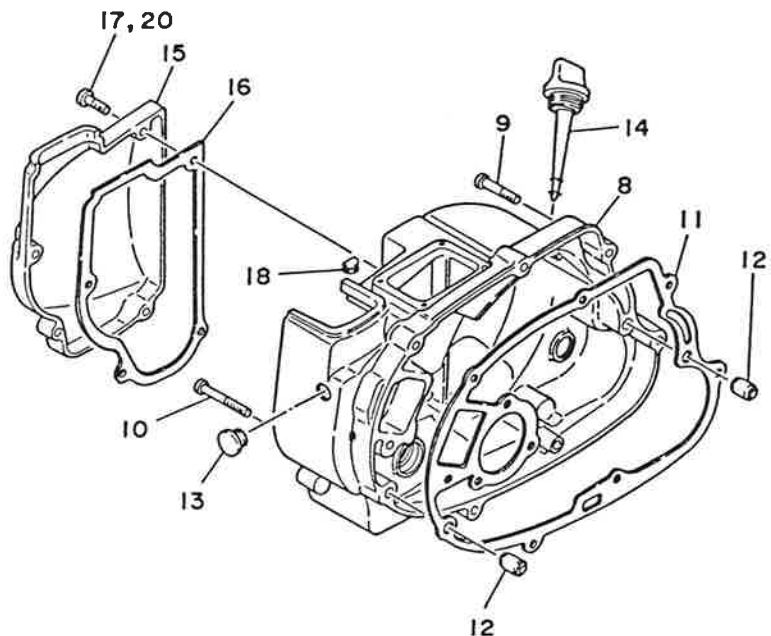


FIG. 7 CRANKCASE COVER 1

| REF. NO. | PART NO.     | DESCRIPTION                | Q'TY | REMARKS |
|----------|--------------|----------------------------|------|---------|
| 1        | 3W3-15411-00 | COVER, crankcase 1         | 1    |         |
| 2        | 92503-06045  | SCREW PAN HEAD             | 1    |         |
| 3        | 92501-06040  | SCREW, pan head            | 1    |         |
| 4        | 92501-06050  | SCREW, pan head            | 1    |         |
| 5        | 99530-10014  | PIN, dowel                 | 2    |         |
| 6        | 164-15415-00 | COVER, generator           | 1    |         |
| 7        | 98501-04006  | SCREW, pan head            | 2    |         |
| 8        | 378-15421-60 | COVER, crankcase 2         | 1    |         |
| 9        | 92501-06030  | SCREW, pan head            | 6    |         |
| 10       | 92501-06040  | SCREW, pan head            | 1    |         |
| 11       | 378-15451-60 | GASKET, crankcase cover 1  | 1    |         |
| 12       | 99530-10014  | PIN, dowel                 | 2    |         |
| 13       | 90480-12012  | GROMMET                    | 1    |         |
| 14       | 315-15362-01 | PLUG, oil level            | 1    |         |
| 15       | 257-15413-00 | COVER, carburetor          | 1    |         |
| 16       | 257-15463-00 | GASKET, carburetor cover 2 | 1    |         |
| 17       | 92503-06018  | SCREW PAN HEAD             | 1    |         |
| 18       | 129-15489-10 | GROMMET                    | 1    |         |
| 19       | 92503-06045  | SCREW PAN HEAD             | 1    |         |
| 20       | 92503-06018  | SCREW PAN HEAD             | 3    |         |



3EE331-8070

B8

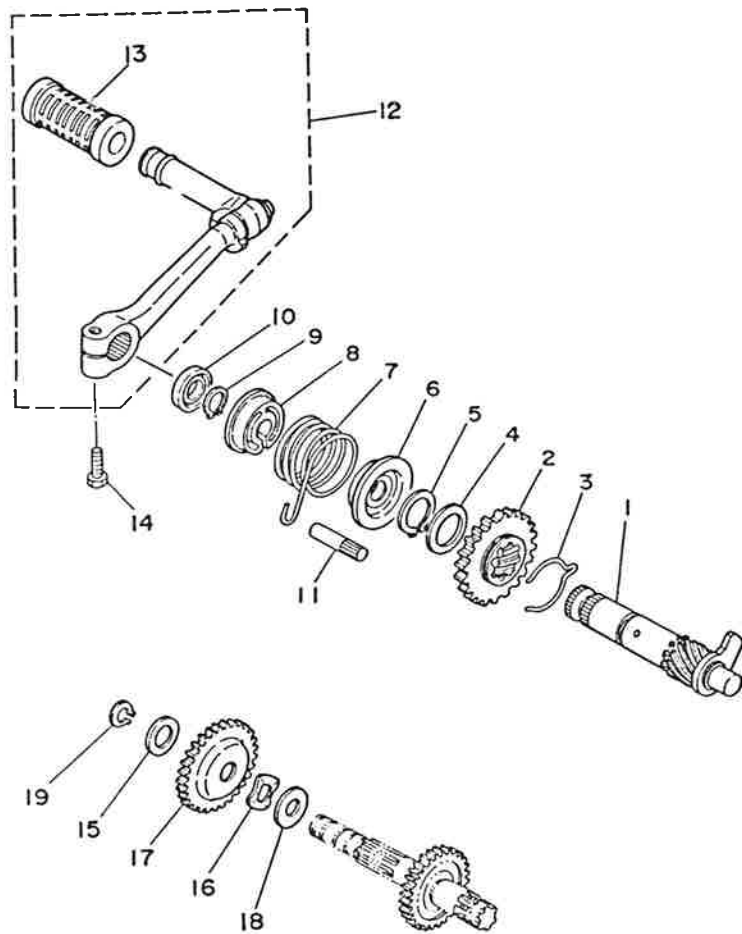


FIG. 8 STARTER

| REF. NO. | PART NO.        | DESCRIPTION           | Q'TY | REMARKS    |
|----------|-----------------|-----------------------|------|------------|
| 1        | 305-15660-04    | KICK AXLE ASSY        | 1    |            |
| 2        | 305-15641-00    | GEAR, kick (26T)      | 1    |            |
| 3        | 90468-26048     | CLIP                  | 1    |            |
| 4        | 117-15644-00    | SHIM                  | 1    |            |
| 5        | 93410-25017     | CIRCLIP               | 1    |            |
| 6        | 132-15664-01    | GUIDE, spring         | 1    |            |
| 7        | 90508-26136     | SPRING, torsion       | 1    |            |
| 8        | 132-15676-01    | COVER, spring         | 1    |            |
| 9        | 99009-15400     | CIRCLIP               | 1    |            |
| 10       | 93109-15001     | OIL SEAL              | 1    |            |
| 11       | 257-15668-00    | STOPPER               | 1    |            |
| 12       | 257-15620-01-91 | KICK CRANK ASSY       | 1    | UNI CHROME |
| 13       | 156-15618-01    | .COVER, kick lever    | 1    |            |
| 14       | 97011-06025     | BOLT                  | 1    |            |
| 15       | 90201-13202     | WASHER, plate         | 1    |            |
| 16       | 90206-15021     | WASHER, wave          | 1    |            |
| 17       | 257-15651-01    | GEAR, kick idle (26T) | 1    |            |
| 18       | 132-15653-00-10 | WASHER                | 1    |            |
| 19       | 99009-13400     | CIRCLIP               | 1    |            |



2RV310-7090

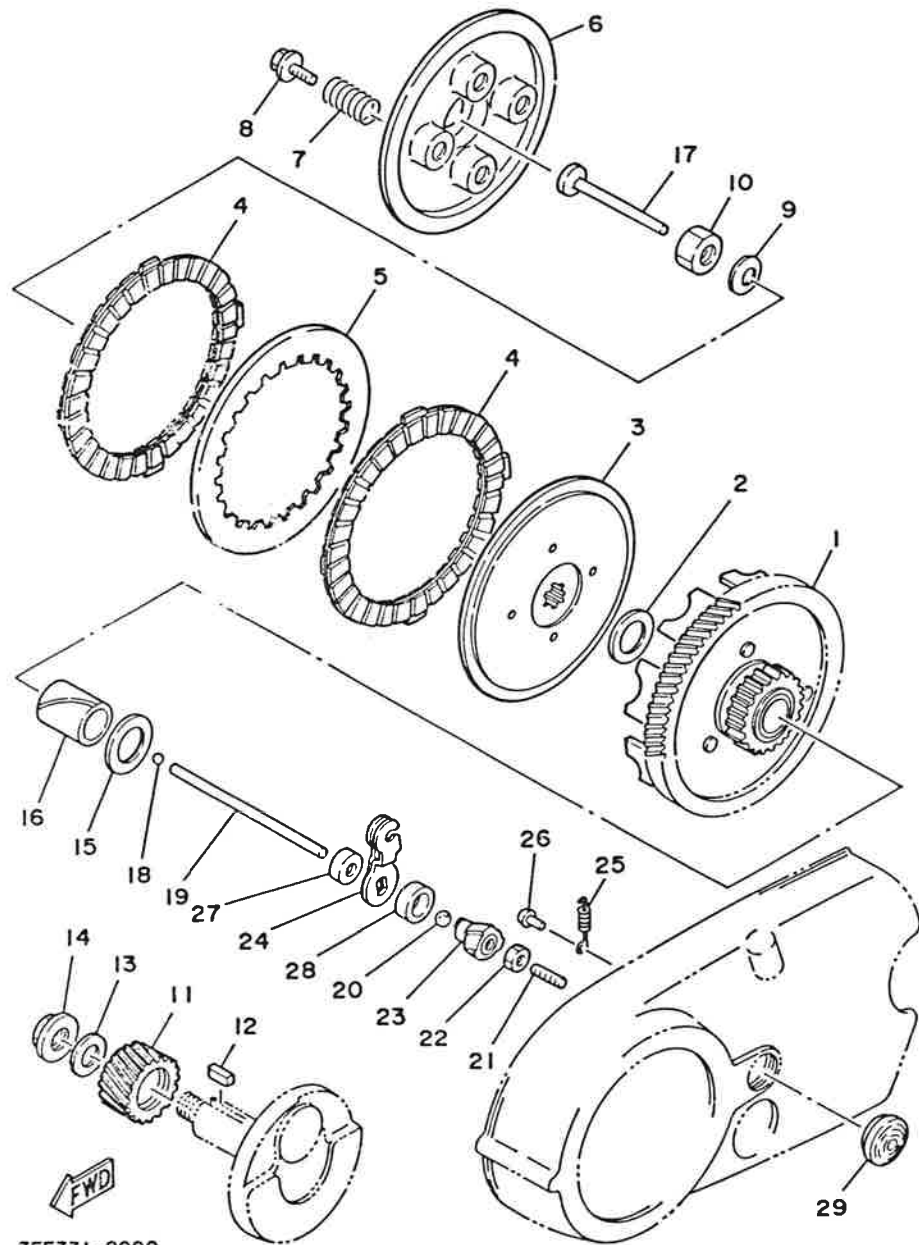
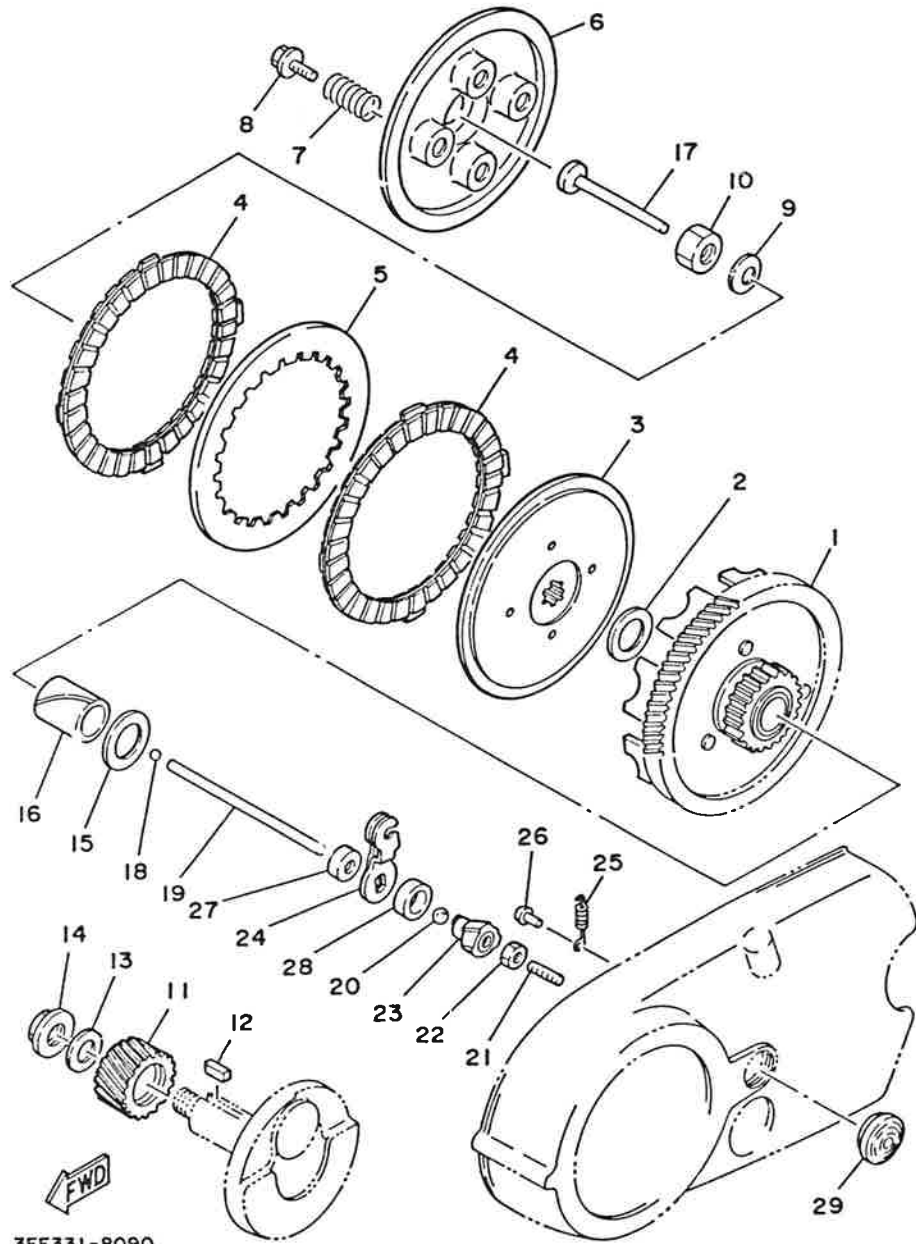


FIG. 9 CLUTCH

| REF. NO. | PART NO.     | DESCRIPTION               | Q'TY | REMARKS |
|----------|--------------|---------------------------|------|---------|
| 1        | 257-16150-03 | PRIMARY DRIVEN GEAR COMP. | 1    |         |
| 2        | 122-16164-00 | PLATE, thrust 2           | 1    |         |
| 3        | 257-16371-01 | BOSS, clutch              | 1    |         |
| 4        | 131-16321-00 | PLATE, friction           | 2    |         |
| 5        | 257-16324-00 | PLATE, clutch 1           | 1    |         |
| 6        | 257-16351-00 | PLATE, pressure 1         | 1    |         |
| 7        | 90501-20122  | SPRING, compression       | 4    |         |
| 8        | 90119-05001  | BOLT, with washer         | 4    |         |
| 9        | 90208-12015  | WASHER, conical spring    | 1    |         |
| 10       | 90170-12060  | NUT                       | 1    |         |
| 11       | 257-16111-01 | GEAR, primary drive (19T) | 1    |         |
| 12       | 90282-05005  | KEY, straight             | 1    |         |
| 13       | 90208-12015  | WASHER, conical spring    | 1    |         |
| 14       | 90179-12244  | NUT                       | 1    |         |
| 15       | 122-16164-00 | PLATE, thrust 2           | 1    |         |
| 16       | 90560-17150  | SPACER                    | 1    |         |
| 17       | 137-16356-00 | ROD, push 1               | 1    |         |
| 18       | 93503-16010  | BALL                      | 1    |         |
| 19       | 257-16357-00 | ROD, push 2               | 1    |         |
| 20       | 93501-04011  | BALL                      | 1    |         |
| 21       | 90113-06009  | BOLT, set                 | 1    |         |
| 22       | 95303-06700  | NUT                       | 1    |         |
| 23       | 257-16341-00 | SCREW, push               | 1    |         |
| 24       | 257-16342-00 | LEVER, push               | 1    |         |
| 25       | 90506-07066  | SPRING, tension           | 1    |         |
| 26       | 132-16346-00 | HOOK, spring              | 1    |         |
| 27       | 93102-04382  | OIL SEAL                  | 1    |         |
| 28       | 93108-15001  | OIL SEAL                  | 1    |         |

FIG. 9 CLUTCH

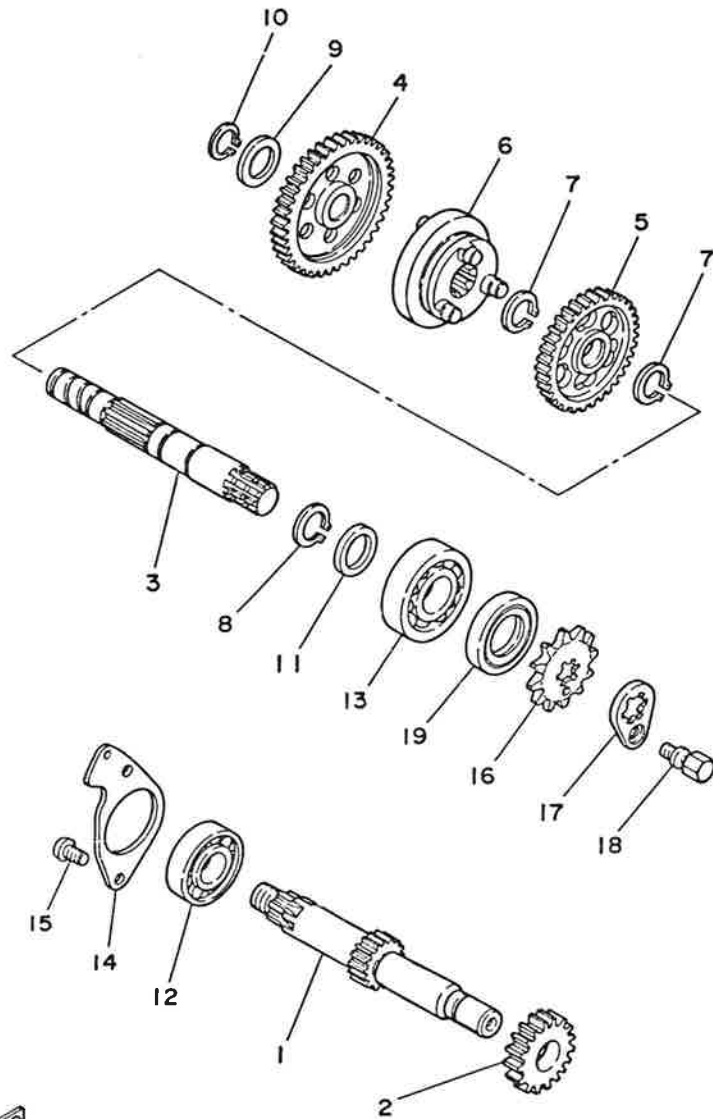
| REF. NO. | PART NO.     | DESCRIPTION | Q'TY | REMARKS |
|----------|--------------|-------------|------|---------|
| 29       | 257-15417-01 | COVER, cap  | 1    |         |



3EE331-8090

**B11**

FIG. 10 TRANSMISSION



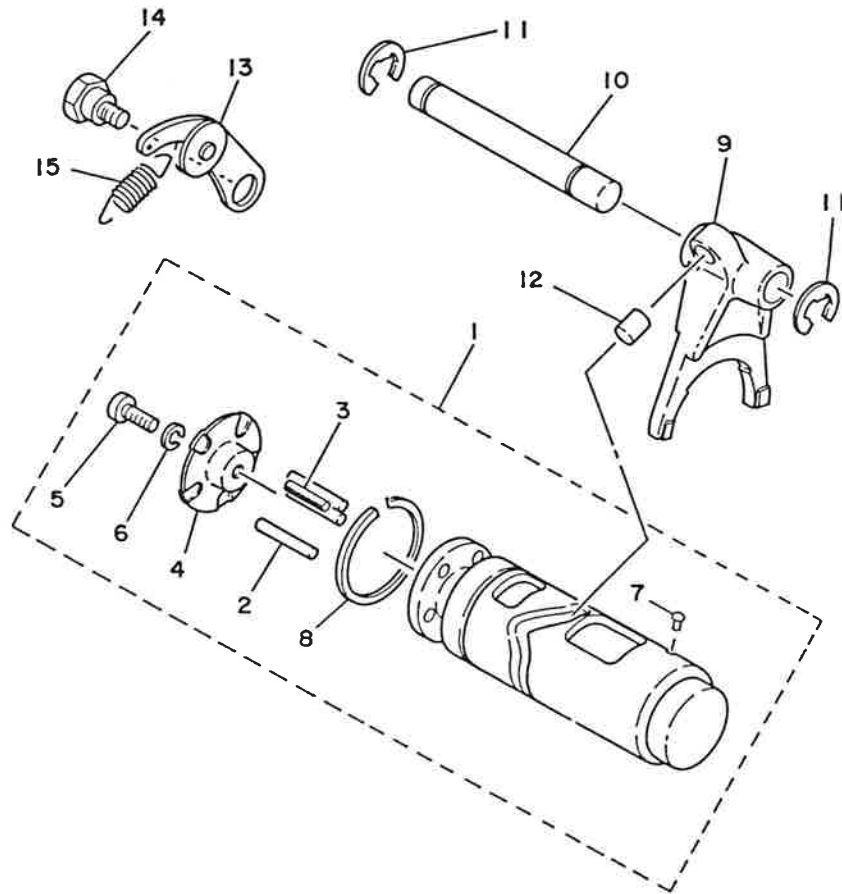
| REF. NO. | PART NO.     | DESCRIPTION           | Q'TY | REMARKS |
|----------|--------------|-----------------------|------|---------|
| 1        | 3W3-17411-01 | AXLE, main            | 1    |         |
| 2        | 3W3-17121-01 | GEAR, 2nd pinion      | 1    |         |
| 3        | 3W3-17421-00 | AXLE, drive           | 1    |         |
| 4        | 257-17211-00 | GEAR, 1st wheel (40T) | 1    |         |
| 5        | 3W3-17221-00 | GEAR, 2nd wheel       | 1    |         |
| 6        | 3W3-17285-00 | CLUTCH, dog           | 1    |         |
| 7        | 99009-16400  | CIRCLIP               | 2    |         |
| 8        | 99009-17400  | CIRCLIP               | 1    |         |
| 9        | 257-17219-00 | SHIM (0.6T)           | 1    |         |
| 10       | 99009-13400  | CIRCLIP               | 1    |         |
| 11       | 90201-17485  | WASHER, plate         | 1    |         |
| 12       | 93306-20333  | BEARING               | 1    |         |
| 13       | 93306-30301  | BEARING (B6303)       | 1    |         |
| 14       | 257-17471-01 | PLATE, cover          | 1    |         |
| 15       | 92501-06012  | SCREW, pan head       | 2    |         |
| 16       | 938A1-14174  | SPROCKET, drive (14T) | 1    |         |
| 17       | 3W3-17456-00 | HOLDER, sprocket      | 1    |         |
| 18       | 90109-06565  | BOLT                  | 1    |         |
| 19       | 93102-17187  | OIL SEAL              | 1    |         |



3EE331-8100

**B12**

FIG. 11 SHIFT CAM. FORK



| REF. NO. | PART NO.     | DESCRIPTION           | Q'TY | REMARKS |
|----------|--------------|-----------------------|------|---------|
| 1        | 3EE-18540-00 | SHIFT CAM ASSY        | 1    |         |
| 2        | 93604-22050  | .PIN, dowel           | 3    |         |
| 3        | 91609-40016  | .PIN, spring          | 1    |         |
| 4        | 164-18561-00 | .PLATE, side 1        | 1    |         |
| 5        | 98501-05012  | .SCREW, pan head      | 1    |         |
| 6        | 92901-05100  | .WASHER, spring       | 1    |         |
| 7        | 136-18542-00 | .POINT, neutral       | 1    |         |
| 8        | 93440-32017  | .CIRCLIP              | 1    |         |
| 9        | 259-18511-01 | FORK, shift 1         | 1    |         |
| 10       | 257-18534-00 | BAR, shift fork guide | 1    |         |
| 11       | 99001-08600  | CIRCLIP               | 2    |         |
| 12       | 90250-06013  | PIN, straight         | 1    |         |
| 13       | 132-18140-01 | STOPPER LEVER ASSY    | 1    |         |
| 14       | 90109-06001  | BOLT                  | 1    |         |
| 15       | 90506-09112  | SPRING, tension       | 1    |         |



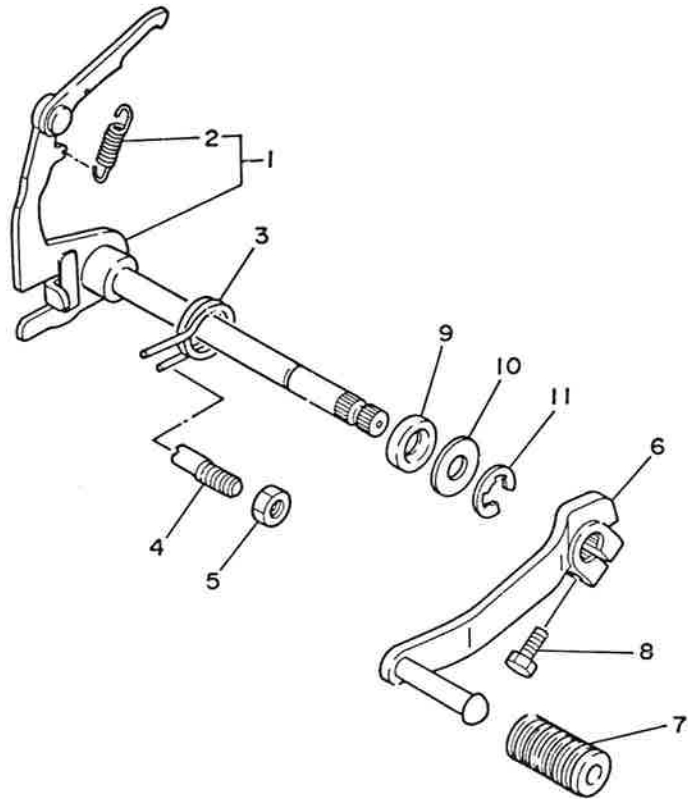
3EE331-8110

**B13**



FIG. 12 SHIFT SHAFT

| REF. NO. | PART NO.     | DESCRIPTION              | Q'TY | REMARKS |
|----------|--------------|--------------------------|------|---------|
| 1        | 257-18101-01 | SHIFT SHAFT ASSY         | 1    |         |
| 2        | 90506-09009  | .SPRING, tension         | 1    |         |
| 3        | 90508-32207  | SPRING, torsion          | 1    |         |
| 4        | 90149-08094  | SCREW                    | 1    |         |
| 5        | 95303-08600  | NUT                      | 1    |         |
| 6        | 3EE-18111-00 | PEDAL, shift             | 1    |         |
| 7        | 132-18113-01 | COVER, shift pedal       | 1    |         |
| 8        | 97021-06020  | BOLT                     | 1    |         |
| 9        | 93102-12106  | OIL SEAL (SD 12-22-5 HS) | 1    |         |
| 10       | 90201-12575  | WASHER, plate            | 1    |         |
| 11       | 99001-10600  | CIRCLIP                  | 1    |         |

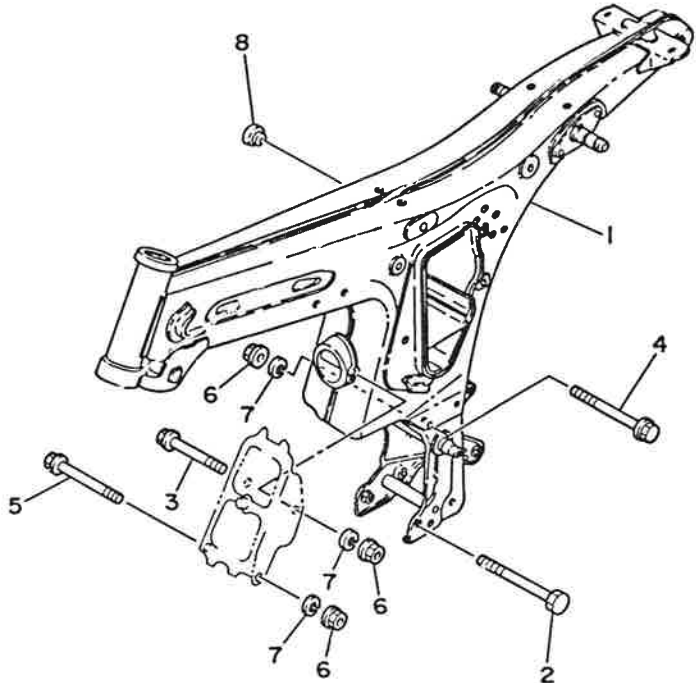


3EE331-8120

**B14**

FIG. 13 FRAME

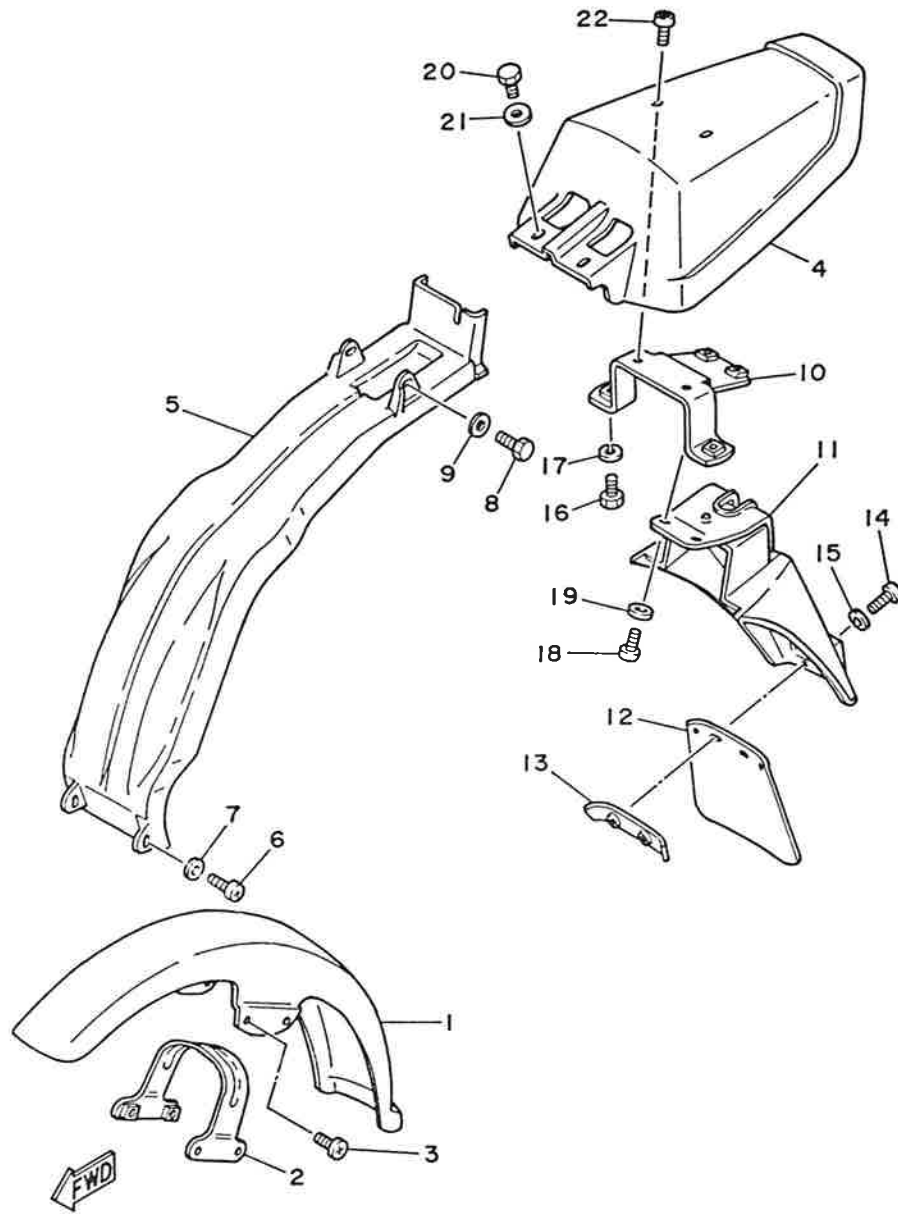
| REF. E.O. | PART NO.        | DESCRIPTION    | Q'TY | REMARKS            |
|-----------|-----------------|----------------|------|--------------------|
| 1         | 3EE-21110-00-33 | FRAME COMP.    | 1    | (MBK) YAMAHA BLACK |
| 2         | 90101-08538     | BOLT           | 1    |                    |
| 3         | 95811-08090     | BOLT, flange   | 1    |                    |
| 4         | 95811-08120     | BOLT, flange   | 1    |                    |
| 5         | 95811-08100     | BOLT, flange   | 1    |                    |
| 6         | 95701-08500     | NUT, flange    | 3    |                    |
| 7         | 92990-08100     | WASHER, spring | 3    |                    |
| 8         | 90480-13203     | GROMMET        | 1    |                    |



3EE331-8130

B15

FIG. 14 FENDER



3EE331-8140

| REF. NO. | PART NO.     | DESCRIPTION          | Q'TY | REMARKS          |
|----------|--------------|----------------------|------|------------------|
| 1        | 3EE-F1510-00 | FRONT FENDER COMP.   | 1    | UR FOR YB (MBK)  |
|          | 3EE-F1510-10 | FRONT FENDER COMP.   | 1    | UR FOR FBL (MBK) |
|          | 3EE-F1510-20 | FRONT FENDER COMP.   | 1    | UR FOR SR (MBK)  |
| 2        | 3EE-F1512-00 | BRACKET, fender      | 1    | MBK              |
| 3        | 98903-06012  | SCREW, bind          | 4    |                  |
| 4        | 3EE-F1610-01 | REAR FENDER COMP.    | 1    | UR FOR YB (MBK)  |
|          | 3EE-F1610-10 | REAR FENDER COMP.    | 1    | UR FOR FBL (MBK) |
|          | 3EE-F1610-20 | REAR FENDER COMP.    | 1    | UR FOR SR (MBK)  |
| 5        | 3EE-F1620-01 | MUD GUARD COMP.      | 1    | MBK              |
| 6        | 92506-06012  | SCREW, pan head      | 2    |                  |
| 7        | 90201-062A8  | WASHER, plate        | 2    |                  |
| 8        | 97313-08012  | BOLT                 | 2    |                  |
| 9        | 92901-08600  | WASHER, plate        | 2    |                  |
| 10       | 3EE-F1602-00 | BRACKET, fender 1    | 1    | MBK              |
| 11       | 3EE-F1680-00 | REAR EXTENSION COMP. | 1    | MBK              |
| 12       | 25K-21521-00 | FLAP, front fender   | 1    |                  |
| 13       | 34V-21622-00 | BAND, flap           | 1    |                  |
| 14       | 98506-05012  | SCREW, pan head      | 2    |                  |
| 15       | 92906-05600  | WASHER, plate        | 2    |                  |
| 16       | 97001-08014  | BOLT                 | 2    |                  |
| 17       | 92990-08100  | WASHER, spring       | 2    |                  |
| 18       | 92501-06014  | SCREW, pan head      | 2    |                  |
| 19       | 92901-06600  | WASHER, plate        | 2    |                  |
| 20       | 97313-08012  | BOLT                 | 2    |                  |
| 21       | 90201-081A6  | WASHER, plate        | 2    |                  |
| 22       | 90149-06264  | SCREW                | 2    |                  |