



# YAMAHA

## PARTS LIST

### MODEL **FS1**

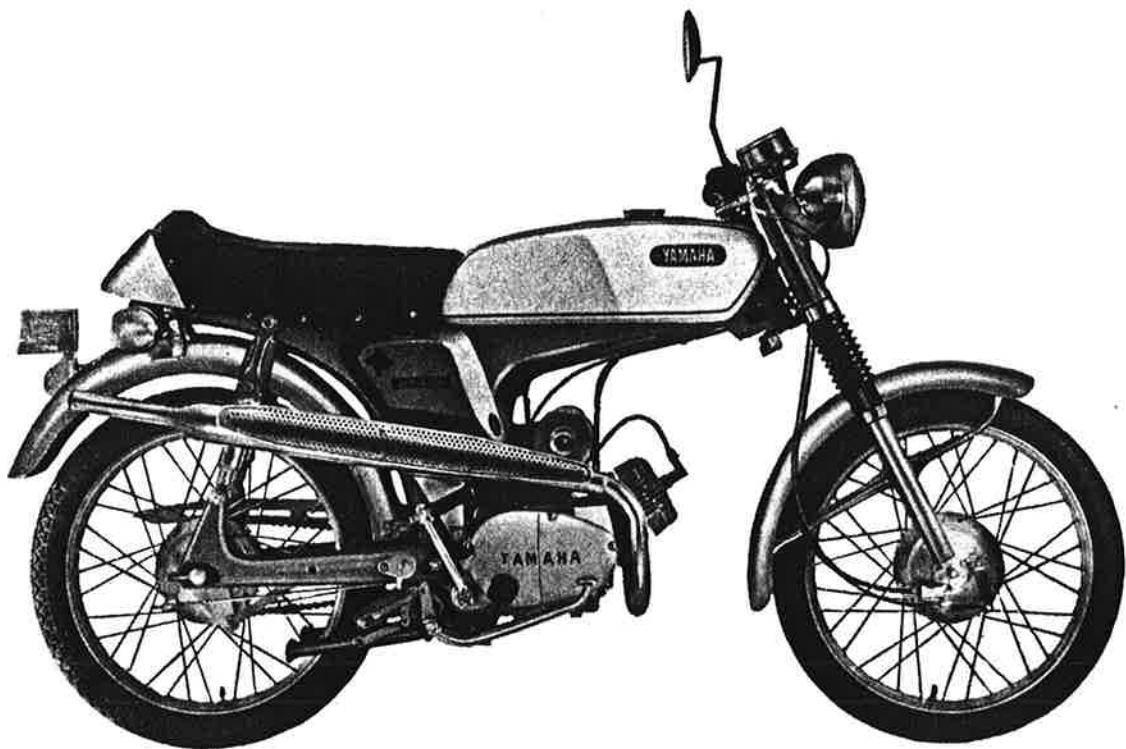
*DREJEVENTIL*

**ISO**

SOME OF THE PARTS IN THIS BOOK HAVE ISO-THREADING. PLEASE MAKE SURE TO CONSULT THIS BOOK WHEN ORDERING PARTS FOR THE MOTORCYCLE DESCRIBED HEREIN.

# YAMAHA MOTOR CO., LTD.

# YAMAHA FS1



# SPECIFICATION

## MODEL FS1

OVERALL LENGTH	1,755 mm
OVERALL WIDTH	555 mm
OVERALL HEIGHT	935 mm
WHEEL BASE	1,160 mm
ROAD CLEARANCE	135 mm
NET WEIGHT	70 kg
BORE & STROKE	40 x 39.7
COMPRESSION RATIO	6.9 : 1
CYLINDER CAPACITY	49cc
MAXIMUM POWER	6 ps / 9,000 rpm
MAXIMUM TORQUE	0.5 kg.m / 8,000 rpm
SPEED RANGE	96 km/h
CLIMBING ABILITY	18°
STARTING SYSTEM	Kick
FUEL TANK CAPACITY	6.0 l
OIL TANK CAPACITY	1.4 l
FRONT TIRE	2.25-17-4PR
REAR TIRE	2.50-17-4PR

# Instructions on Parts List

## YAMAHA FS1

1. DIMENSIONS: All dimensions are given in millimeters with the exception of steel balls which are given in inches.

2. KEY TO SYMBOLS

R.H	.....	Right hand side (Viewed from the rider's seat facing forward)
L.H	.....	Left hand side (Viewed from the rider's seat facing forward)
S.R	.....	Suggested retail price
U.R	.....	Use size (thickness) and/or numbers as required
☆	.....	Government inspected parts
△	.....	Not supplied as a single part
S	.....	Indicates "S" shaped circlip
E	.....	Indicates "E" shaped circlip
R	.....	Indicates "R" shaped circlip
T	.....	Number of teeth in a gear
V	.....	Voltage for light bulbs
W	.....	Wattage for light bulbs
L	.....	Length
S	.....	"S" type oil seal
SD	.....	"SD" type oil seal
SO	.....	"SO" type oil seal
SW	.....	"SW" type oil seal

3. COMPONENT PARTS: Component parts of an assembly are preceded by a dot (.) as follows:

KICK CRANK ASS'Y		
. WASHER, spring	)	Component parts
. LEVER, kick	)	
. PIN	)	

Component parts which are mounted on either side of the m/c. are listed in the following sequence:

- 3a).— Parts to be mounted on "LEFT SIDE" are listed first.—
- 3b).— Parts to be mounted on "RIGHT SIDE" are listed second.—
- 3c).— Parts which can be mounted on "EITHER SIDE" are listed next to the above parts.—

You are requested to be very careful, when ordering, not to make a mistake in stating the part numbers, since only a single wrong figure will entirely change the contents and will cause you to receive quite a different part.

We believe that this introduction will prove a great help to you, but if you have any ambiguous point, please do not hesitate to contact us.

# CONTENTS

## ENGINE

Fig. 1	Crankcase .....	1
Fig. 2	Crankcase Cover .....	3
Fig. 3	Crankshaft & Piston .....	5
Fig. 4	Clutch .....	7
Fig. 5	Transmission .....	9
Fig. 6	Shifter A .....	11
Fig. 7	Shifter B .....	13
Fig. 8	Kick .....	15
Fig. 9	Air Cleaner .....	17
Fig. 10	Carburetor .....	19
Fig. 11	Muffler .....	21
Fig. 12	Oil Pump .....	23
Fig. 13	Flywheel Magneto (MITSUBISHI) .....	25
Fig. 14	Flywheel Magneto (HITACHI) .....	27

## CHASSIS

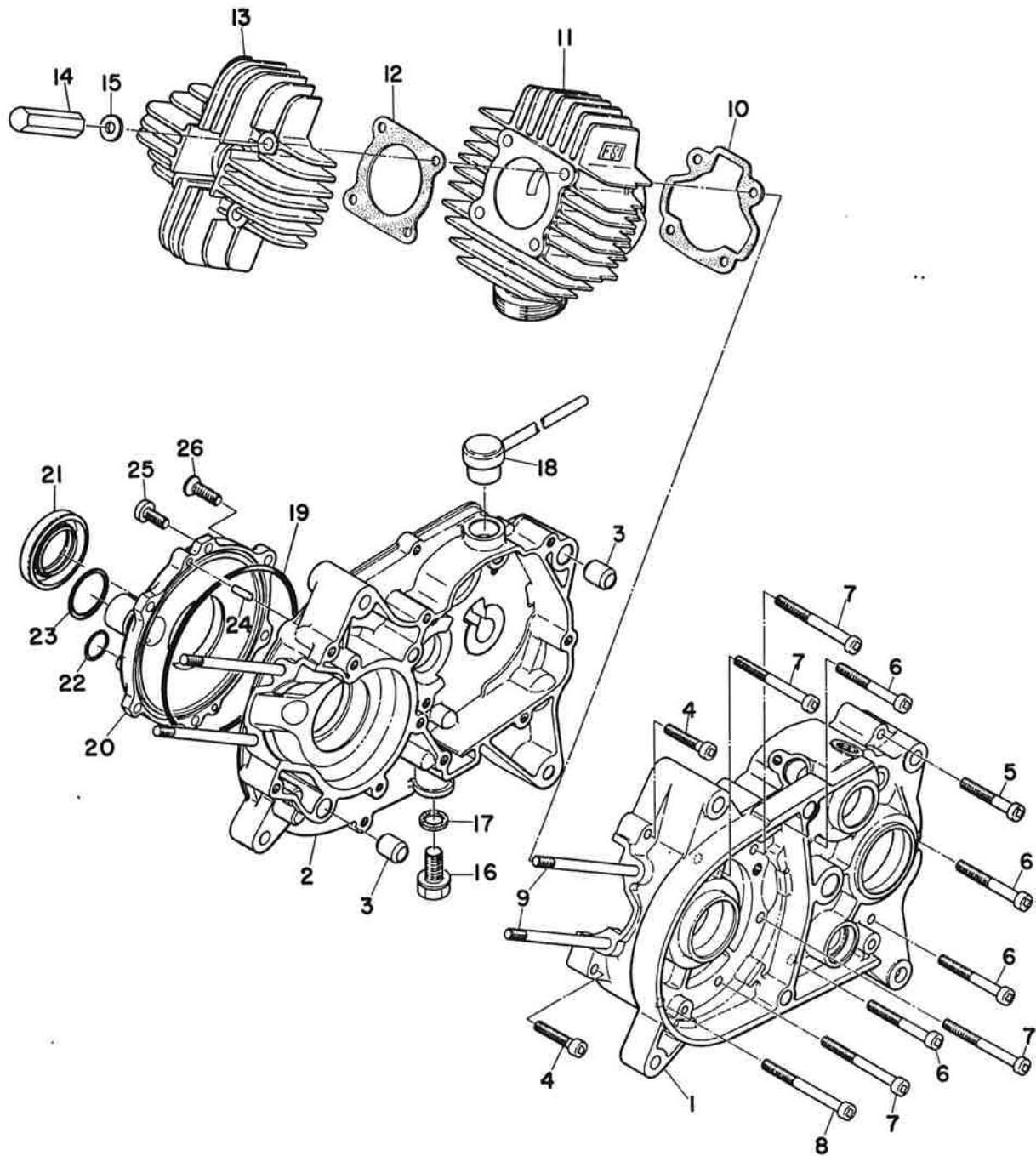
Fig. 15	Frame, Rear Cushion & Rear Fender .....	31
Fig. 16	Rear Arm & Chain Case .....	33
Fig. 17	Stand, Footrest & Rear Brake Pedal .....	35
Fig. 18	Front Fork & Front Fender .....	37
Fig. 19	Handle & Wire .....	41
Fig. 20	Fuel Tank .....	45
Fig. 21	Oil Tank .....	47
Fig. 22	Seat & Carrier .....	49
Fig. 23	Front Wheel .....	51
Fig. 24	Rear Wheel .....	53
Fig. 25	Head Lamp & Speedometer .....	57
Fig. 26	Tail Lamp .....	59
Fig. 27	Flasher Lamp .....	61
Fig. 28	Electrical .....	63

## NUMERICAL INDEX

# ENGINE



Fig. 1 CRANKCASE

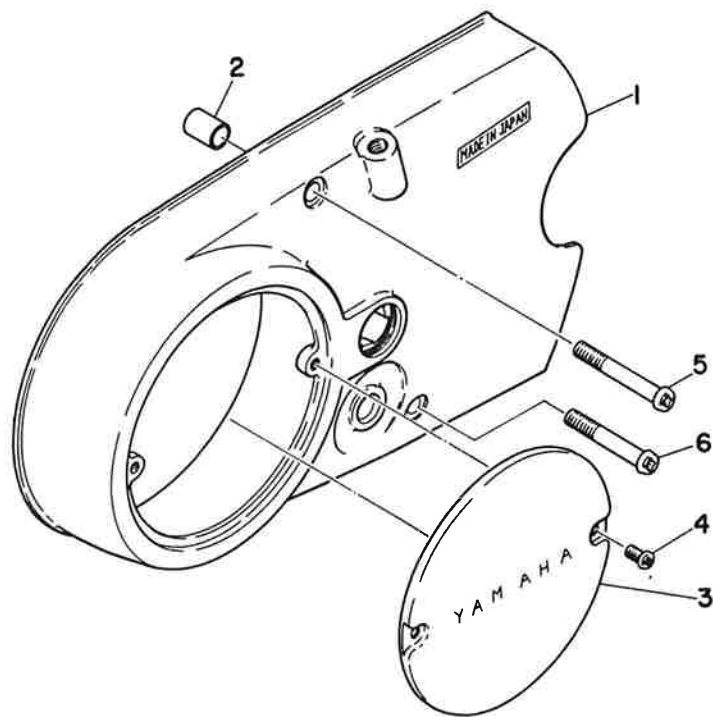
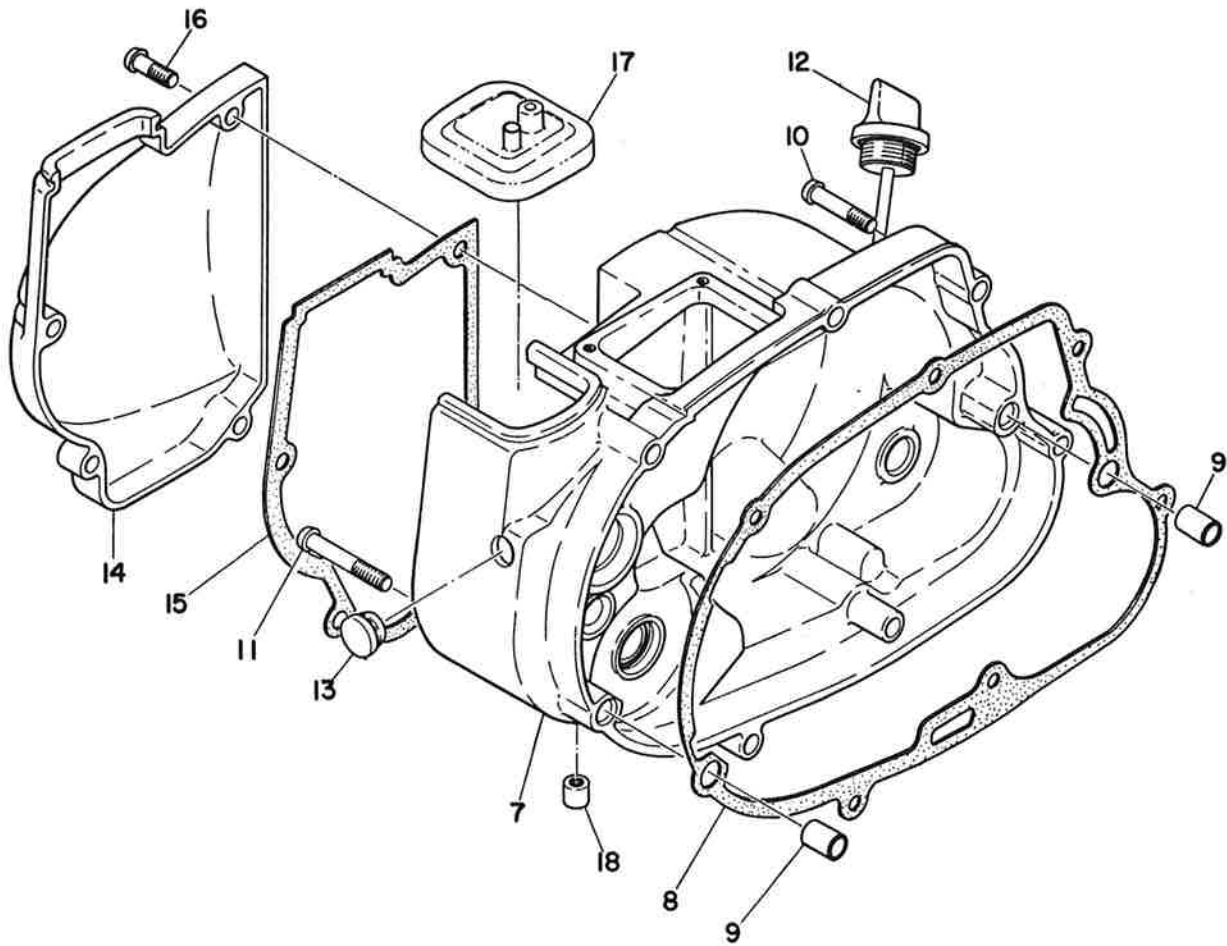


# CRANKCASE

Ref No.	Parts No.	Parts Name	Description	Q'ty	S-R	Remarks
1- 1	260-15111-00	CASE, crank (L. H)	(ISO)	1		
1- 2	257-15121-00	CASE, crank (R. H)		1		
1- 3	91810-08016	PIN, dowel	9. 8-12-16	2		
1- 4	92501-06030	SCREW, pan head		2		
1- 5	92501-06045	SCREW, pan head		1		
1- 6	92501-06050	SCREW, pan head		4		
1- 7	92501-06060	SCREW, pan head		4		
1- 8	92501-06065	SCREW, pan head		1		
1- 9	109-11361-00	BOLT, cylinder holding		4		
1-10	109-11351-00	GASKET, cylinder		1		
1-11	(260)-11311-00	CYLINDER BRUG - 257-		1		
1-12	102-11181-01	GASKET, cylinder head		1		
1-13	260-11111-00	HEAD, cylinder		1		
1-14	126-11171-60	NUT, cylinder holding		4		
1-15	92901-06200	WASHER, plain		4		
1-16	132-15351-00	PLUG, drain		1		
1-17	132-15353-00	GASKET, drain plug		1		
1-18	132-15371-00	BREATHER		1		
1-19	180-13554-00	RING, rubber		1		
1-20	(257)-13551-00	COVER, valve BRUG 347		1		
1-21	93103-28012	OIL SEAL 2	SW-28-47-8	1		
1-22	93210-12014	O-RING	2.62-10.77	1		
1-23	93210-23029	O-RING	3.52-21.82	1		
1-24	93604-14012	PIN, dowel	4-13.8	2		
1-25	92501-06015	SCREW, pan head		5		
1-26	92701-06018	SCREW, flat head		1		



Fig. 2 CRANKCASE COVER

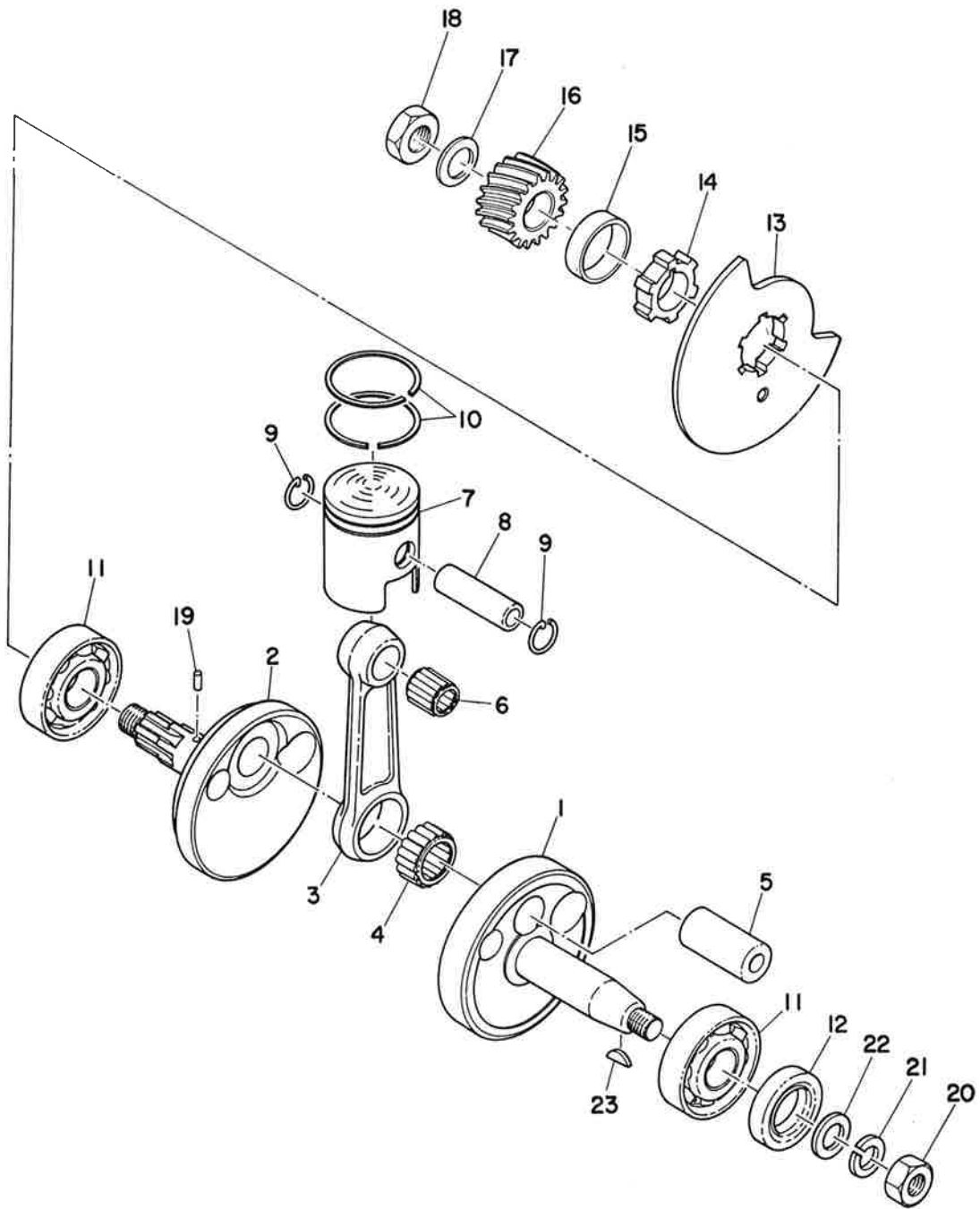


## CRANKCASE COVER

Ref No.	Parts No.	Parts Name	Description	Q'ty	S·R	Remarks
2- 1	257-15410-00	CRANKCASE COVER ASS'Y (L.H)	ISO	1		
2- 2	91810-03014	PIN, dowel	8.5-10-14	2		
2- 3	164-15415-00	COVER, generator		1		
2- 4	98501-04008	SCREW, pan head	ISO	2		
2- 5	92501-06045	SCREW, pan head		2		
2- 6	92501-06040	SCREW, pan head		1		
2- 7	257-15421-00	COVER, crankcase (R.H)	ISO	1		
2- 8	257-15451-00	GASKET, crankcase cover		1		
2- 9	91810-03014	PIN, dowel	8.5-10-14	2		
2-10	92501-06030	SCREW, pan head		6		
2-11	92501-06040	SCREW, pan head		1		
2-12	180-15362-00	PLUG, oil level		1		
2-13	122-15486-00	GROMMET		1		
2-14	257-15413-00	COVER, carburetor		1		
2-15	257-15463-00	GASKET, carburetor cover		1		
2-16	92501-06018	SCREW, pan head		4		
2-17	257-14481-00	CAP, carburetor		1		
2-18	257-15433-00	CLEANER, drain		1		



Fig. 3 CRANKSHAFT PISTON

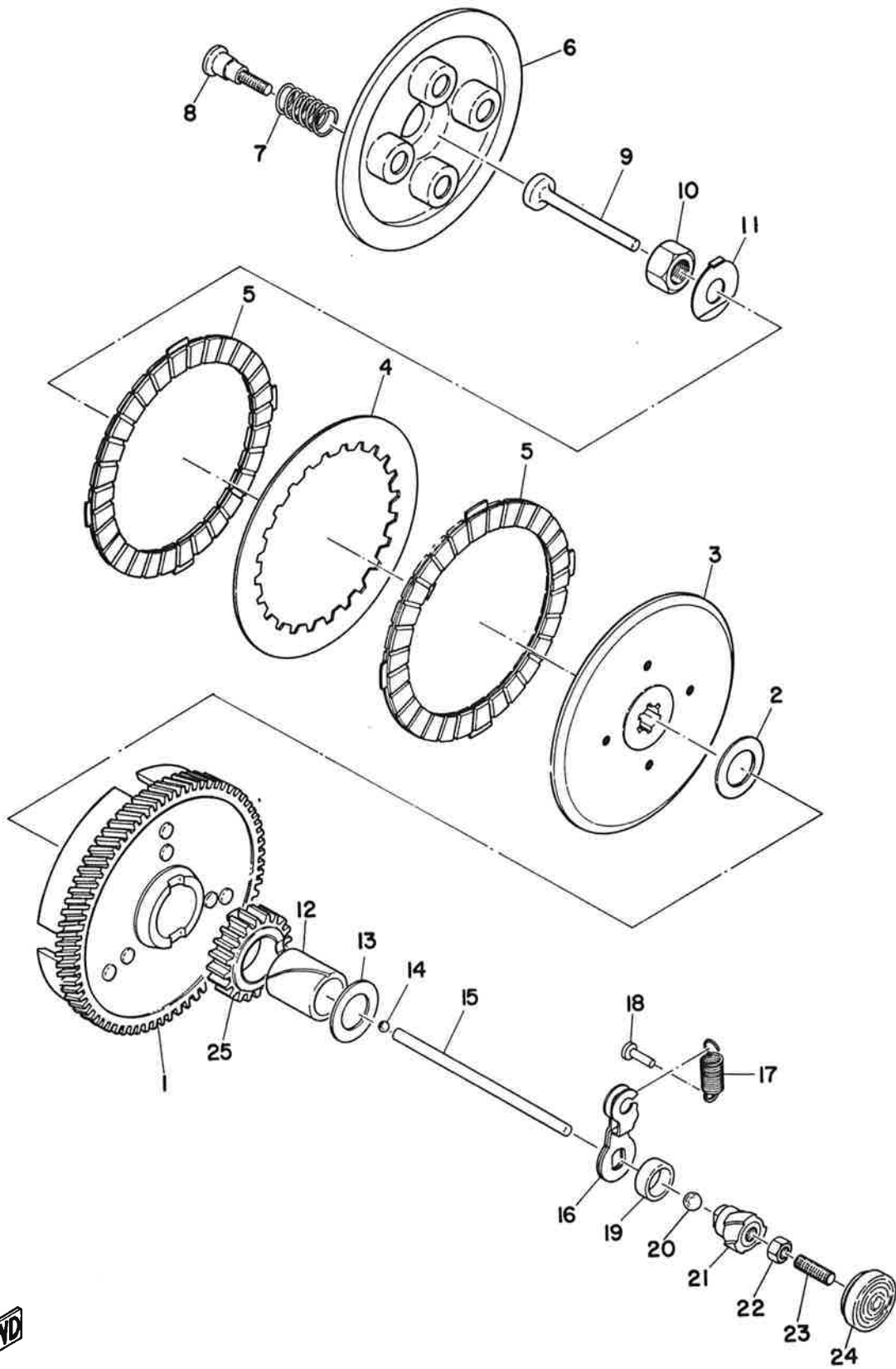


FWD

# CRANKSHAFT & PISTON

Ref No.	Parts No.	Parts Name	Description	Q'ty	S-R	Remarks
3- 0-1	257-11400-00	CRANKSHAFT ASS'Y		1		
3- 1	257-11412-00	. CRANK (L.H)		1		
3- 2	257-11422-00	. CRANK (R.H)		1		
3- 3	126-11651-00	. ROD, connecting		1		
3- 4	93310-41810	. BEARING, big end		1		
3- 5	257-11681-00	. PIN, crank		1		
3- 6	93310-11202	BEARING, small end		1		
3- 7	260-11631-00-97	PISTON (97)		U.R 1		
	260-11631-00-98	PISTON (98)				
	260-11631-00-99	PISTON (99)				
	260-11631-00-01	PISTON (00)				
	260-11631-10	PISTON (1st o. s)	0.25mm		1	
	260-11631-20	PISTON (2nd o. s)	0.5mm	1		
3- 8	102-11633-01	PIN, piston		1		
3- 9	132-11634-00	CLIP, piston pin		2		
3-10	109-11610-02	PISTON RING SET		1s		
	109-11610-12	PISTON RING SET (1st o. s)	0.25mm	1s		
	109-11610-22	PISTON RING SET (2nd o. s)	0.5mm	1s		
3-11	93306-30302	BEARING	6303C3	2		
3-12	93102-17067	OIL SEAL	SD-17-35-7	1		
3-13	↘ 260-13512-00 =	VALVE 283-13512-00		1		
3-14	257-13515-00	COLLAR, valve		1		
3-15	257-16136-00	COLLAR, distance		1		
3-16	257-16111-00	GEAR, primary drive	19T	1		
3-17	164-16119-00	SPRING, bellevile		1		
3-18	137-16377-00	NUT, clutch boss		1		
3-19	93603-08067	PIN, dowel		1		
3-20	98801-12200	NUT	(ISO)	1		
3-21	92901-12100	WASHER, spring		1		
3-22	214-11557-01	WASHER		1		
3-23	146-11545-00	KEY, woodruff		1		
	049-10551-00	LOCATOR PIN				
		(05 592323)				

Fig. 4 CLUTCH

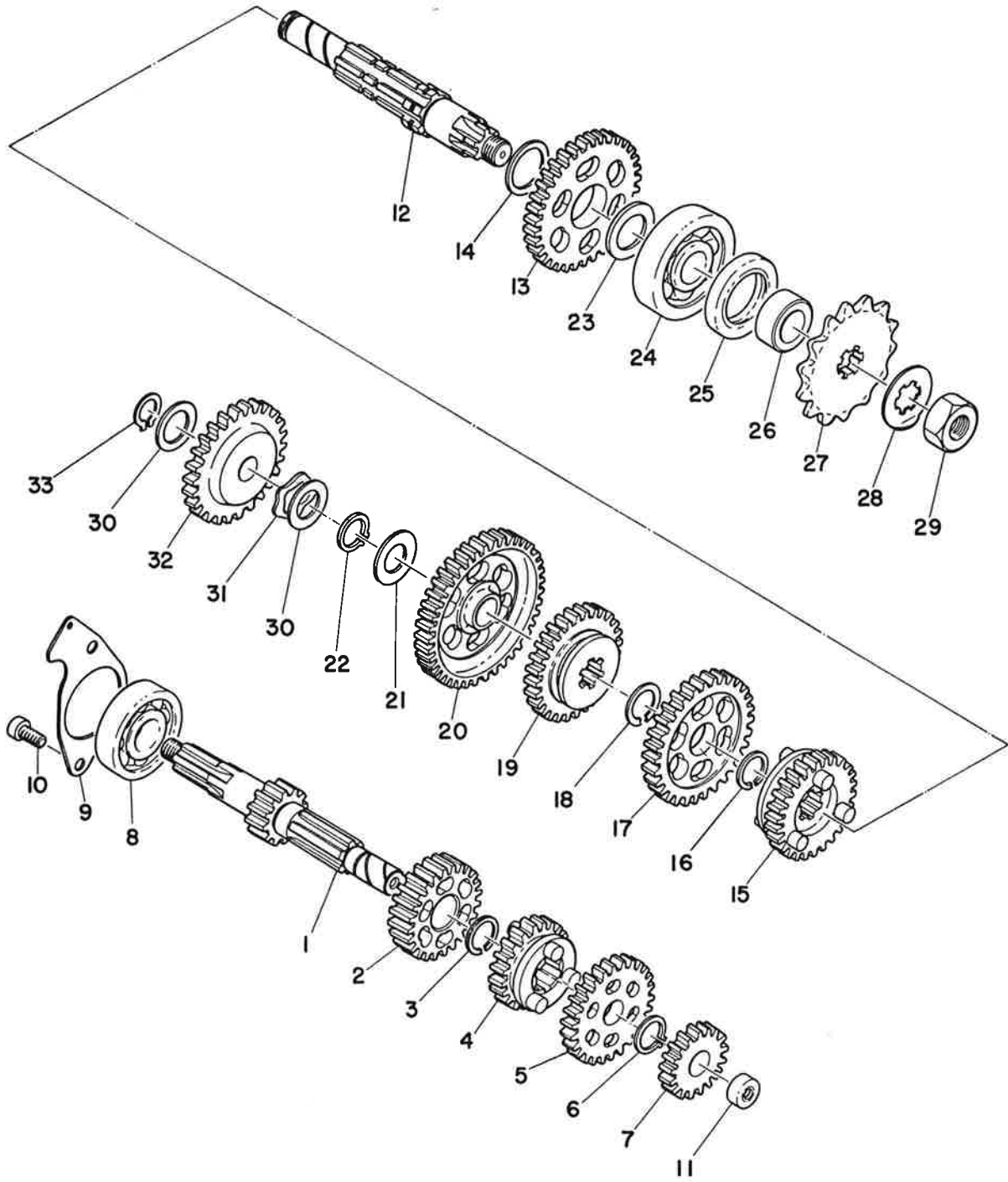


FWD

# CLUTCH

Ref No.	Parts No.	Parts Name	Description	Q'ty	S·R	Remarks
4- 0-1	257-16301-00	CLUTCH ASS'Y	(ISO)	1		
4- 1	257-16150-00	. DRIVEN GEAR COMP.	74 T	1		
4- 2	122-16164-00	. PLATE, thrust	17.2-30-2	1		
4- 3	257-16371-00	. BOSS, clutch		1		
4- 4	257-16324-00	. PLATE, clutch		1		
4- 5	131-16321-00	. PLATE, friction		2		
4- 6	257-16351-00	. PLATE, pressure		1		
4- 7	137-16333-00	. SPRING, clutch		4		
4- 8	137-16337-01	. SCREW, spring	(ISO)	4		
4- 9	137-16356-00	ROD, push (1)		1		
4-10	137-16377-00	NUT, clutch boss		1		
4-11	137-16378-00	WASHER, clutch boss		1		
4-12	257-16181-00	SPACER		1		
4-13	122-16164-00	PLATE, thrust	17.2-30-2	1		
4-14	93501-04004	BALL	1/4"	1		
4-15	257-16357-00	ROD, push (2)		1		
4-16	257-16342-00	LEVER, push		1		
4-17	132-16345-00	SPRING, lever return		1		
4-18	132-16346-00	HOOK, spring		1		
4-19	93108-15001	OIL SEAL	OSO-15.3-	1		
4-20	93503-16003	BALL	3/16" 22-7	1		
4-21	257-16341-00	SCREW, push		1		
4-22	92801-06300	NUT		1		
4-23	257-16343-00	SCREW, adjusting		1		
4-24	257-15417-00	COVER, cap		1		
4-25	164-15631-01	GEAR, kick pinion	19T	1		

Fig. 5 TRANSMISSION



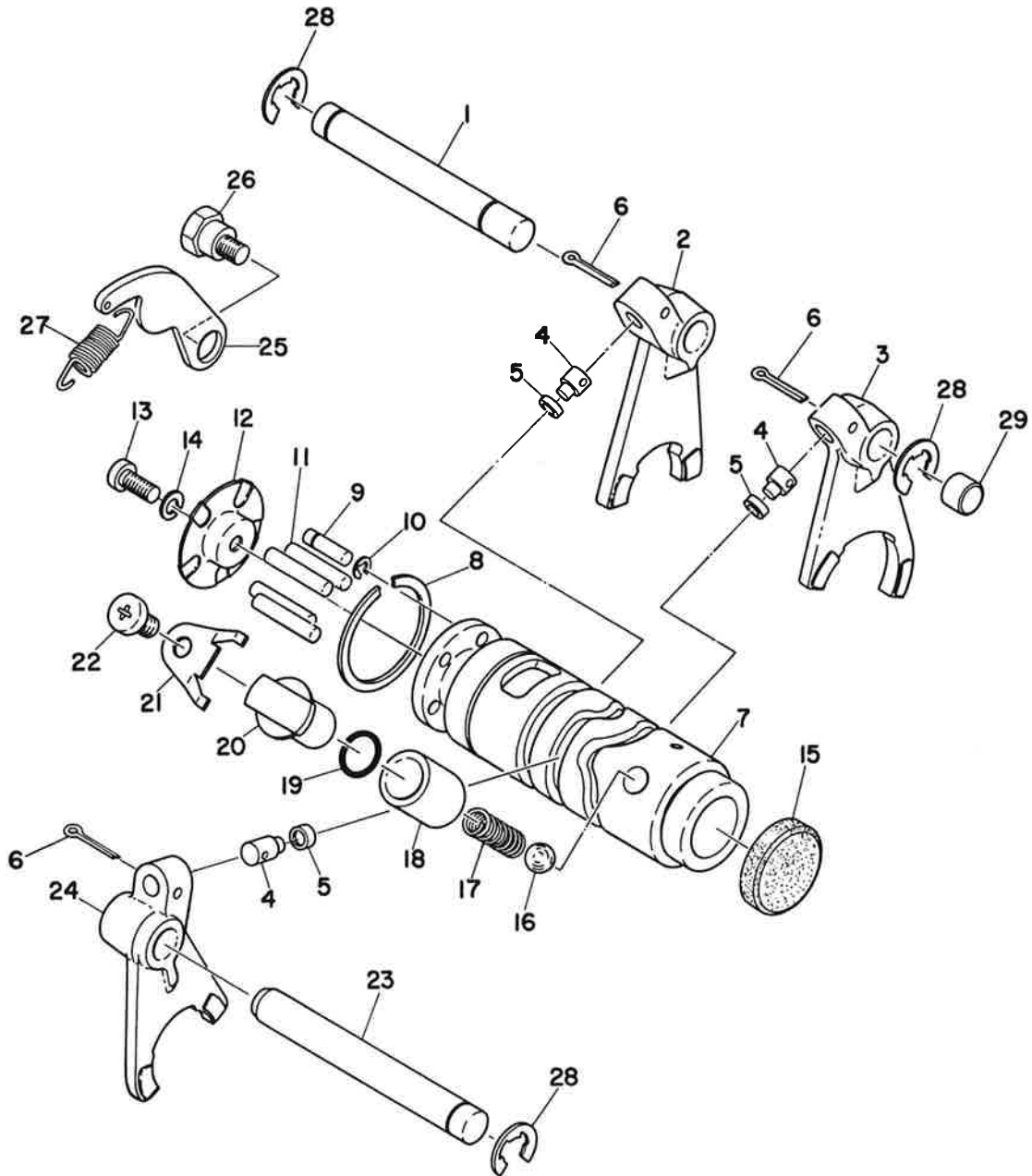
FWD

# TRANSMISSION

Ref No.	Parts No.	Parts Name	Description	Q'ty	S·R	Remarks
5- 1	260-17411-00	AXLE, main		1		
5- 2	260-17141-00	GEAR, 4th pinion	24T	1		
5- 3	257-17414-00	CLIP		1		
5- 4	260-17131-00	GEAR, 3rd pinion	21T	1		
5- 5	260-17151-00	GEAR, 5th pinion	26T	1		
5- 6	93410-13004	CIRCLIP		1		
5- 7	260-17121-00	GEAR, 2nd pinion	17T	1		
5- 8	93306-20301	BEARING	6203	1		
5- 9	257-17471-00	PLATE, bearing cover		1		
5-10	92501-06012	SCREW, pan head		2		
5-11	257-15389-00	SEAL, push rod		1		
5-12	260-17421-00	AXLE, drive		1		
5-13	260-17221-00	GEAR, 2nd wheel	35T	1		
5-14	132-17414-00	CLIP		1		
5-15	260-17251-00	GEAR, 5th wheel	26T	1		
5-16	257-17414-00	CLIP		1		
5-17	260-17231-00	GEAR, 3rd wheel	31T	1		
5-18	257-17414-00	CLIP		1		
5-19	260-17241-00	GEAR, 4th wheel	28T	1		
5-20	260-17211-00	GEAR, 1st wheel	41T	1		
5-21	257-17219-00-04	SHIM	13.2-24-0.4	} U.R 1		
	257-17219-00-06	SHIM	13.2-24-0.6			
	257-17219-00-08	SHIM	13.2-24-0.8			
5-22	93410-13004	CIRCLIP		1		
5-23	260-16164-00	PLATE, thrust		1		
5-24	93306-30305	BEARING	6303	1		
5-25	93102-25017	OIL SEAL	SD-25-40-5	1		
5-26	257-17462-00	COLLAR, distance		1		
5-27	(257)17461-40	SPROCKET, drive	14T	1		BRUG 347-
5-28	257-17464-00	WASHER, lock		1		17451-90
5-29	257-17463-00	NUT, lock		1		
5-30	201-15653-00	WASHER, thrust	13.2-23-1	2		
5-31	137-15643-00	WASHER, wave		1		
5-32	257-15651-00	GEAR, kick idle	28T	1		
5-33	93410-13004	CIRCLIP		1		



Fig. 6 SHIFTER A



## SHIFTER A

Ref No.	Parts No.	Parts Name	Description	Q'ty	S·R	Remarks
6- 1	257-18534-00	BAR, shift fork guide		1		
6- 2	260-18513-00	FORK, shift (3)		1		
6- 3	257-18511-00	FORK, shift (1)		1		
6- 4	260-18552-00	PIN, cam follower		3		
6- 5	260-18551-00	ROLLER, cam follower		3		
6- 6	91401-25017	PIN, cotter		3		
6- 7	260-18541-00	CAM, shift	(ISO)	1		
6- 8	93440-32017	CIRCLIP		1		
6- 9	174-18544-00	PIN, locating		1		
6-10	93430-03014	CLIP, locating pin		1		
6-11	93604-22050	PIN, dowel		4		
6-12	164-18561-00	PLATE, side		1		
6-13	98501-05012	SCREW, pan head	(ISO)	1		
6-14	92901-05100	WASHER, spring		1		
6-15	257-18589-00	PLUG, blind		1		
6-16	93505-16006	BALL	5/16"	1		
6-17	260-18558-00	SPRING, neutral		1		
6-18	260-18598-00	BUSHING		1		
6-19	93210-10118	O-RING	1.4-9.8	1		
6-20	260-18587-00	BUSHING		1		
6-21	214-17812-00	STOPPER		1		
6-22	92501-06010	SCREW, pan head		1		
6-23	257-18531-00	BAR, shift fork guide		1		
6-24	260-18512-00	FORK, shift (2)		1		
6-25	132-18148-01	LEVER, stopper		1		
6-26	132-18177-00	BOLT, stopper		1		
6-27	132-18143-00	SPRING, stopper		1		
6-28	93430-08006	CIRCLIP		3		
6-29	150-18328-00	PLUG, blind		1		

